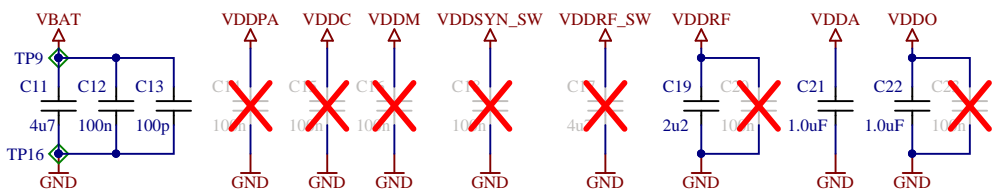


**Notes**

- (1) Low current LEDs, If = 2mA
- (2) Pin 7 is keyed and removed from connector
- (3) Default configuration of GPIOs: Open collector with 100k pull up

✘ Not mounted



FID1 FID2 FID3 FID4 FID5 FID6

E1 RSL101.02 B

Title: <b>Main</b>		Size: A4
Revision: <b>1.02 B</b>	Number: Variant Production	Sheet: 1 of 1
Project: RSL10	Init: TALRA	
Last Modified: 16.09.2019	File: USB_Dongle.SchDoc	

arendi  
We are your solution.

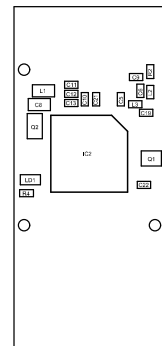
1

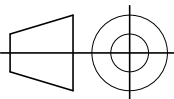

2

3

4

USB\_Dongle.PcbDoc  
 Top Assembly Drawing  
 20.09.2019



USB_Dongle.PcbDoc				Title		
	Scale	Engineer	R. Talib	TALRA	<b>RSL10</b> Top Assembly Drawing	
	1:1	released				
		Arendi Products GmbH Eichtalstrasse 55 CH-8634 Hombrechtikon www.arendi.ch		Size	Part-No.	Rev.
				<b>A4</b>		<b>1.02 B</b>

1

2

3

4

A

A

B

B

C

C

D

D

1

2

3

4

A

B

C

D

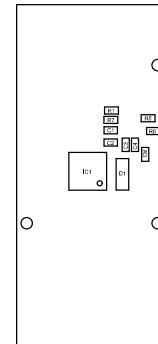
USB\_Dongle.PcbDoc  
 Bottom Assembly Drawing  
 20.09.2019

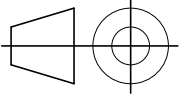

A

B

C

D

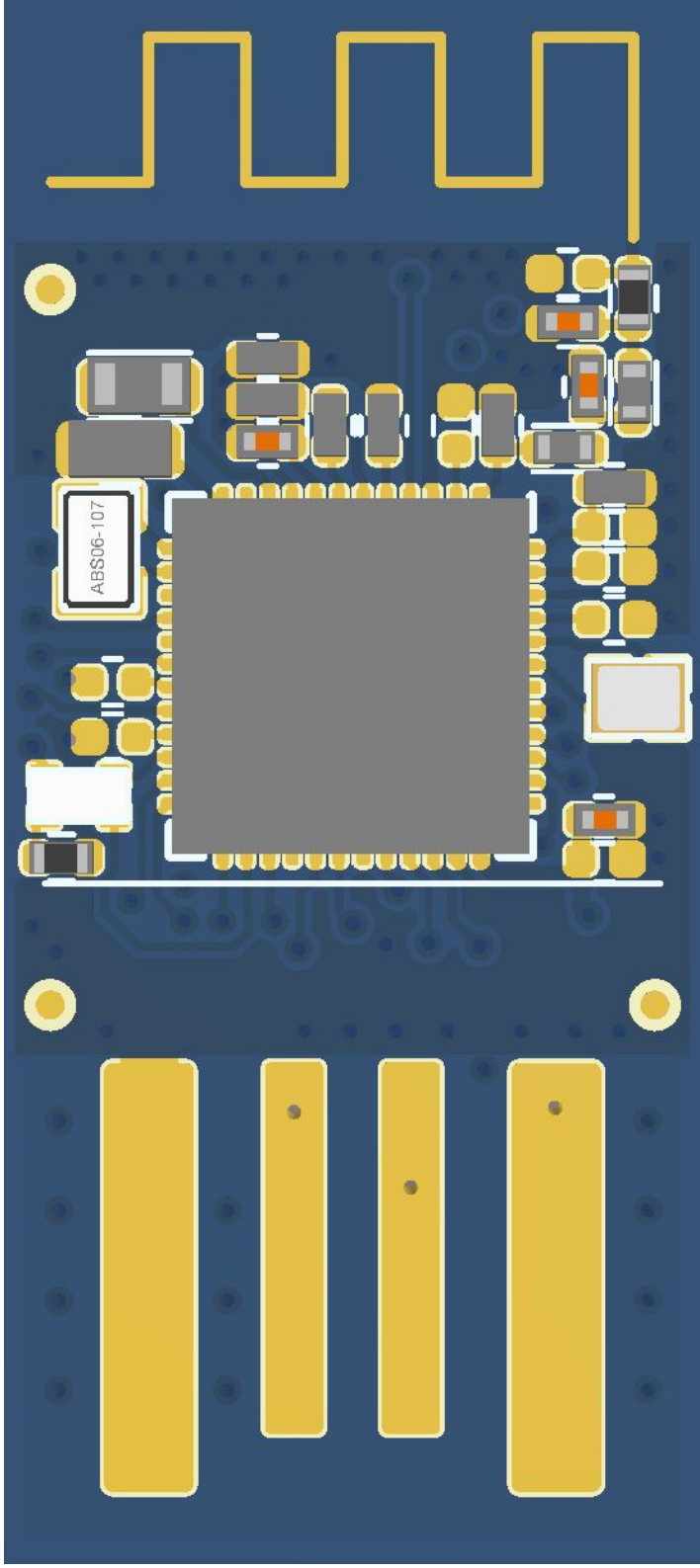


USB_Dongle.PcbDoc				Title		
	Scale	Engineer	R. Talib	TALRA	<b>RSL10</b> Bottom Assembly Drawing	
	1:1	released				
		Arendi Products GmbH Eichtalstrasse 55 CH-8634 Hombrechtikon www.arendi.ch		Size	Part-No.	Rev.
				A4		1.02 B

1

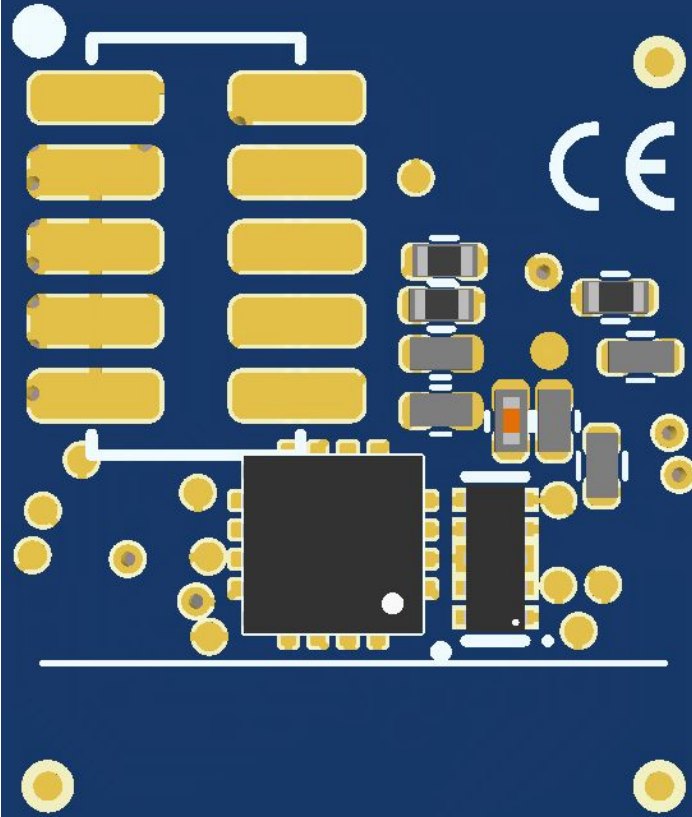
2

4



ON Semiconductor®

ON

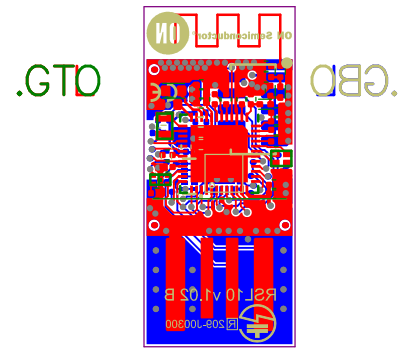


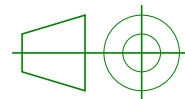

RSL10 v1.02 B



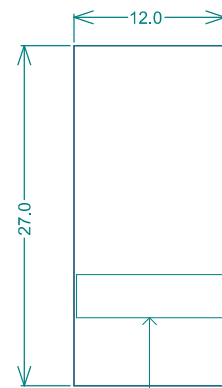
® 209-J00300

USB\_Dongle.PcbDoc  
 Multilayer Composite Print  
 20.09.2019



USB_Dongle.PcbDoc				Title		
	Scale	Engineer	R. Talib	TALRA	<b>RSL10</b> Multilayer Composite Print	
	1:1	released				
		Arendi Products GmbH Eichtalstrasse 55 CH-8634 Hombrechtikon www.arendi.ch		Size	Part-No.	Rev.
				<b>A4</b>		<b>1.02 B</b>

USB\_Dongle.PcbDoc  
Board Specification  
20.09.2019



Dimension Drawing  
! Additional information see Drill Guide and Drill Drawing

area for approval logos  
on bottom overlay  
manufacturer logo nowhere allowed!

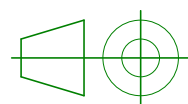
PCB Specifications

IPC-A600 Classificaton:	Class 2
Number of Layers:	4
Material:	FR4 blue
Surface Finish:	chem. Ni/Au
PCB thickness:.	2.4mm +/- 10%
Cu thickness outer Layer:	35um
Cu thickness inner Layer:	35um
Soldermask	yes/blue
Silkscreen	yes/white
Min. Line width:	150um
Min. Line spacing	150um
Min. Vias and Hole	250um/250um

Layer Stack

Layer	Name	Material	Thickness	Constant	Board Layer Stack
	Top Overlay				
	Top Solder	Solder Resist	0.010mm	3.5	
1	Top Layer	Copper	0.035mm		
	Dielectric 1	FR-4	0.385mm	4.2	
2	Mid Layer 1	Copper	0.035mm		
	Dielectric 3	FR-4	1.430mm	4.2	
3	Mid Layer 2	Copper	0.035mm		
	Dielectric 4		0.385mm	4.2	
4	Bottom Layer	Copper	0.035mm		
	Bottom Solder	Solder Resist	0.010mm	3.5	
	Bottom Overlay				

USB\_Dongle.PcbDoc



Scale

1:1

Engineer

R. Talib

TALRA

released

Title

**RSL10**

Board Specification

**arendi**

Arendi Products GmbH  
Eichtalstrasse 55  
CH-8634 Hombrechtikon

www.arendi.ch

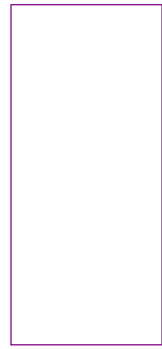
Size

**A4**

Part-No.

Rev.

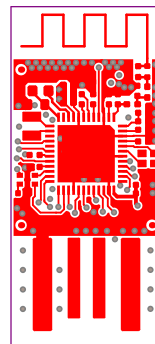
**1.02 B**

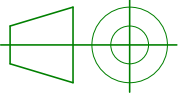





USB\_Dongle.PcbDoc  
Top Layer  
20.09.2019

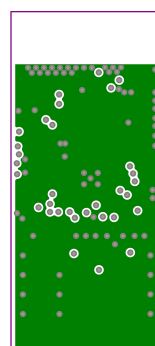
.GTL

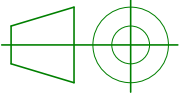



USB_Dongle.PcbDoc				Title		
	Scale	Engineer	R. Talib	TALRA	<b>RSL10</b> Top Layer	
	1:1	released				
		Arendi Products GmbH Eichtalstrasse 55 CH-8634 Hombrechtikon www.arendi.ch		Size	Part-No.	Rev.
				<b>A4</b>		<b>1.02 B</b>

USB\_Dongle.PcbDoc  
MidLayer1  
20.09.2019

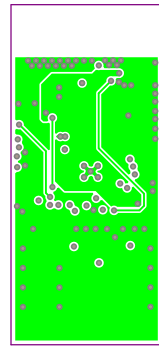
.G1

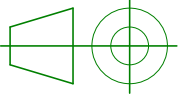



USB_Dongle.PcbDoc				Title		
	Scale	Engineer	R. Talib	TALRA	<b>RSL10</b> MidLayer1	
	1:1	released				
		Arendi Products GmbH Eichtalstrasse 55 CH-8634 Hombrechtikon www.arendi.ch		Size	Part-No.	Rev.
				<b>A4</b>		<b>1.02 B</b>

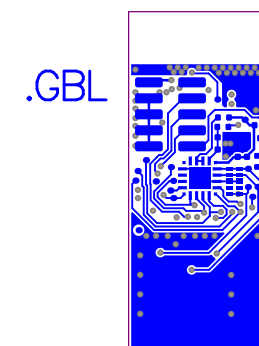
USB\_Dongle.PcbDoc  
 MidLayer 2  
 20.09.2019

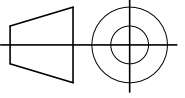

.G2



USB_Dongle.PcbDoc				Title		
	Scale	Engineer	R. Talib	TALRA	<b>RSL10</b> MidLayer2	
	1:1	released				
		Arendi Products GmbH Eichtalstrasse 55 CH-8634 Hombrechtikon www.arendi.ch		Size	Part-No.	Rev.
				<b>A4</b>		<b>1.02 B</b>

1  
A  
USB\_Dongle.PcbDoc  
Bottom Layer  
20.09.2019

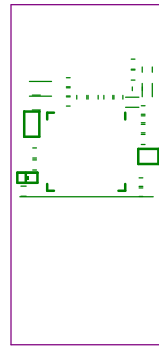


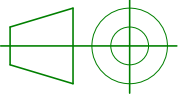

USB_Dongle.PcbDoc				Title		
	Scale	Engineer	R. Talib	TALRA	<b>RSL10</b> Bottom Layer	
	1:1	released				
		Arendi Products GmbH Eichtalstrasse 55 CH-8634 Hombrechtikon www.arendi.ch		Size	Part-No.	Rev.
				<b>A4</b>		<b>1.02 B</b>

1 2 4

USB\_Dongle.PcbDoc  
Top Silkscreen Overlay  
20.09.2019

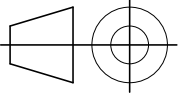

.GTO



USB_Dongle.PcbDoc				Title		
	Scale	Engineer	R. Talib	TALRA	<b>RSL10</b> Top Silkscreen Overlay	
	1:1	released				
		Arendi Products GmbH Eichtalstrasse 55 CH-8634 Hombrechtikon www.arendi.ch		Size	Part-No.	Rev.
				<b>A4</b>		<b>1.02 B</b>

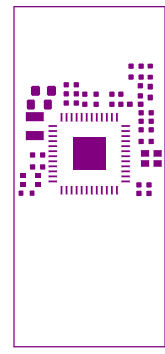
USB\_Dongle.PcbDoc  
 Bottom Silkscreen Overlay  
 20.09.2019

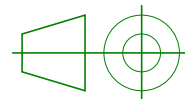



USB_Dongle.PcbDoc				Title		
	Scale	Engineer	R. Talib	TALRA	<b>RSL10</b> Bottom Silkscreen Overlay	
	1:1	released				
		Arendi Products GmbH Eichtalstrasse 55 CH-8634 Hombrechtikon www.arendi.ch		Size	Part-No.	Rev.
				A4		1.02 B

USB\_Dongle.PcbDoc  
Top Paste Mask Print  
20.09.2019

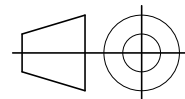

.GTP



USB_Dongle.PcbDoc				Title		
	Scale	Engineer	R. Talib	TALRA	<b>RSL10</b> Top Paste Mask Print	
	1:1	released				
		Arendi Products GmbH Eichtalstrasse 55 CH-8634 Hombrechtikon www.arendi.ch		Size	Part-No.	Rev.
				<b>A4</b>		<b>1.02 B</b>

USB\_Dongle.PcbDoc  
Bottom Paste Mask Print  
20.09.2019

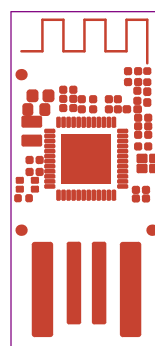


USB_Dongle.PcbDoc				Title		
	Scale	Engineer	R. Talib	TALRA	<b>RSL10</b> Bottom Paste Mask Print	
	1:1	released				
		Arendi Products GmbH Eichtalstrasse 55 CH-8634 Hombrechtikon www.arendi.ch		Size	Part-No.	Rev.
				<b>A4</b>		<b>1.02 B</b>



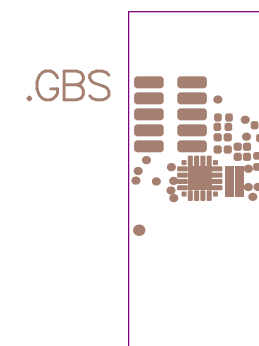
USB\_Dongle.PcbDoc  
 Top Solder Mask Print  
 20.09.2019

.GTS



USB_Dongle.PcbDoc				Title		
	Scale	Engineer	R. Talib	TALRA	<b>RSL10</b> Top Solder Mask Print	
	1:1	released				
		Arendi Products GmbH Eichtalstrasse 55 CH-8634 Hombrechtikon www.arendi.ch		Size	Part-No.	Rev.
				<b>A4</b>		<b>1.02 B</b>

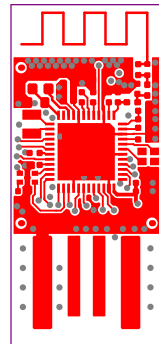
USB\_Dongle.PcbDoc  
 Bottom Solder Mask Print  
 20.09.2019

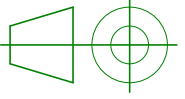



USB_Dongle.PcbDoc				Title			
	Scale	Engineer	R. Talib	TALRA	<b>RSL10</b> Bottom Solder Mask Print		
	1:1	released					
			Arendi Products GmbH Eichtalstrasse 55 CH-8634 Hombrechtikon www.arendi.ch		Size	Part-No.	Rev.
					A4		1.02 B

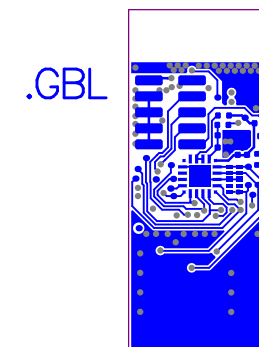
USB\_Dongle.PcbDoc  
Top Pad Master  
20.09.2019

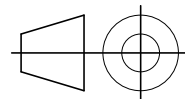

.GTL



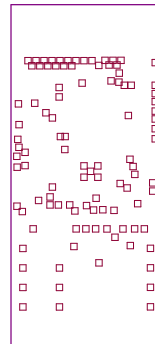
USB_Dongle.PcbDoc				Title		
	Scale	Engineer	R. Talib	TALRA	<b>RSL10</b> Top Pad Master	
	1:1	released				
		Arendi Products GmbH Eichtalstrasse 55 CH-8634 Hombrechtikon www.arendi.ch		Size	Part-No.	Rev.
				<b>A4</b>		<b>1.02 B</b>

USB\_Dongle.PcbDoc  
 Bottom Pad Master  
 20.09.2019



USB_Dongle.PcbDoc				Title		
	Scale	Engineer	R. Talib	TALRA	<b>RSL10</b> Bottom Pad Master	
	1:1	released				
		Arendi Products GmbH Eichtalstrasse 55 CH-8634 Hombrechtikon www.arendi.ch		Size	Part-No.	Rev.
				A4		1.02 B

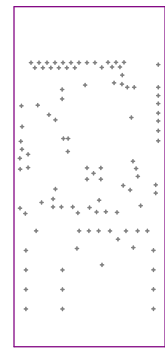
USB\_Dongle.PcbDoc  
 Drill Drawing For (Bottom Layer,Top Layer)  
 20.09.2019

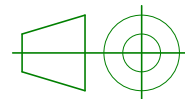



Symbol	Count	Hole Size	Via/Pad
□	102	0.25mm (9.84mil)	Via
	102 Total		

USB_Dongle.PcbDoc				Title		
	Scale	Engineer	R. Talib	TALRA	<b>RSL10</b> Drill Drawing For (Bottom Layer,Top Layer)	
	1:1	released				
		Arendi Products GmbH Eichtalstrasse 55 CH-8634 Hombrechtikon www.arendi.ch		Size	Part-No.	Rev.
				<b>A4</b>		<b>1.02 B</b>

USB\_Dongle.PcbDoc  
 Drill Guide For (Bottom Layer,Top Layer)  
 20.09.2019



USB_Dongle.PcbDoc				Title		
	Scale	Engineer	R. Talib	TALRA	<b>RSL10</b> Drill Guide For (Bottom Layer,Top Layer)	
	1:1	released				
		Arendi Products GmbH Eichtalstrasse 55 CH-8634 Hombrechtikon www.arendi.ch		Size	Part-No.	Rev.
				<b>A4</b>		<b>1.02 B</b>